

ATTACHMENT A

ARCHITECTURAL PLANS

**5 LINK ROAD, 947 SOUTH DOWLING
STREET AND 132-142 EPSOM ROAD,
ZETLAND**

ATTACHMENT A



LEGEND:

- Existing Site Boundary
- Proposed Site Boundary
- Existing Lots & Area Outlines
- Existing Buildings
- Future Developments (Under Construction)
- Existing Landscape Open Space
- Future Landscape Open Space
- 1, 2, 3... Slabs

REFERENCES:

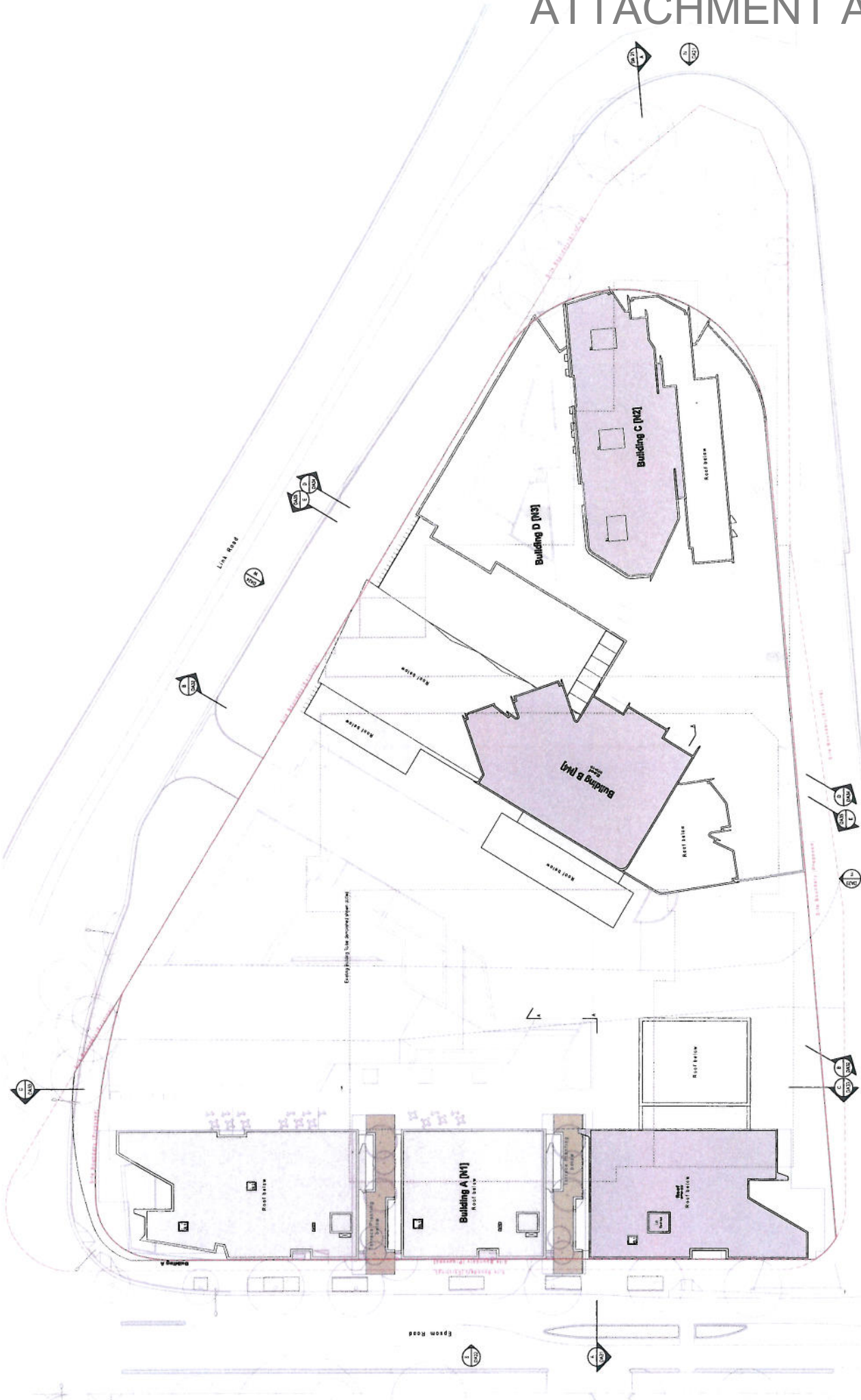
- (1) LRM Subject Site (formerly described as 'Central North Site' [Stage 1] DA D2000213462)
- (2) 'Dollina' South Site - Phase 2, 3 & 4 Approved [Stage 1] DA D200013462
- (3) 'Overland' Overland Site - DA D200013462
- (4) 'Overland' Overland Site - DA D200013462
- (5) 'Epsom Park' Epsom Park - City of Sydney Chapter 6, Proposed Masterplan

1:500 Scale
 Date: 11/03/2017
 Project: 15-16 Link Rd, 152 Epsom Rd, Epsom NSW 2137
 Client: LINK

LINK
 CONSULTING ENGINEERS & ARCHITECTS
 15-16 LINK RD, EPSOM NSW 2137
 CONTACT: PH: 02 9550 1111
 EMAIL: INFO@LINKNSW.COM.AU
 WEBSITE: WWW.LINKNSW.COM.AU

turner
 CONSULTING ENGINEERS & ARCHITECTS
 15-16 LINK RD, EPSOM NSW 2137
 CONTACT: PH: 02 9550 1111
 EMAIL: INFO@TURNERNSW.COM.AU
 WEBSITE: WWW.TURNERNSW.COM.AU

ATTACHMENT A



NET PLAN:

LEGEND: (Refer to DW2 for floor occupation of Materials & Products)

Blue Hatched	BH	Blue Hatched	CD	Car Deck
Green Hatched	GH	Green Hatched	ED	Electricity
Red Hatched	RD	Red Hatched	FD	Fuel Tank
Yellow Hatched	YH	Yellow Hatched	GD	Garage
Pink Hatched	PH	Pink Hatched	LD	Living Room
White Hatched	WH	White Hatched	OD	Office
Grey Hatched	GH	Grey Hatched	PD	Play Deck
Black Hatched	BH	Black Hatched	SD	Storage
Blue Hatched	BL	Blue Hatched	TD	Tea Room
Green Hatched	GL	Green Hatched	UD	Utility Room
Red Hatched	RL	Red Hatched	VD	Veranda
Yellow Hatched	YL	Yellow Hatched	WD	Workshop
Pink Hatched	PL	Pink Hatched	XD	Other
White Hatched	WL	White Hatched	YD	Other
Grey Hatched	GL	Grey Hatched	ZD	Other
Black Hatched	BL	Black Hatched		

PROPERTY INFORMATION:
 Project Name: [Project Name]
 Site No: [Site No]
 Date: [Date]
 Scale: [Scale]

TURNER
 CONSULTING ENGINEERS
 ZETLAND

LINK
 PROPERTY DEVELOPER

ATTACHMENT A



KEY PLAN

LINK
APARTMENTS ZETLAND

1:1000

DATE: 11/03/2017

PROJECT: LINK APARTMENTS ZETLAND

TURNER

LEGEND: (Refer to DAT for detail description of Materials & Finishes)

- B-1 Living Area
- B-2 Kitchen / Dining
- B-3 Bathroom
- B-4 Bedroom
- B-5 Corridor
- B-6 Balcony
- B-7 Terrace
- B-8 Communal Area
- B-9 Storage
- B-10 Utility
- B-11 Plant Room
- B-12 Lift Lobby
- B-13 Lift Shaft
- B-14 Fire Escape
- B-15 Fire Alarm Control Panel
- B-16 Fire Alarm Call Point
- B-17 Fire Alarm Call Point
- B-18 Fire Alarm Call Point
- B-19 Fire Alarm Call Point
- B-20 Fire Alarm Call Point
- B-21 Fire Alarm Call Point
- B-22 Fire Alarm Call Point
- B-23 Fire Alarm Call Point
- B-24 Fire Alarm Call Point
- B-25 Fire Alarm Call Point
- B-26 Fire Alarm Call Point
- B-27 Fire Alarm Call Point
- B-28 Fire Alarm Call Point
- B-29 Fire Alarm Call Point
- B-30 Fire Alarm Call Point
- B-31 Fire Alarm Call Point
- B-32 Fire Alarm Call Point
- B-33 Fire Alarm Call Point
- B-34 Fire Alarm Call Point
- B-35 Fire Alarm Call Point
- B-36 Fire Alarm Call Point
- B-37 Fire Alarm Call Point
- B-38 Fire Alarm Call Point
- B-39 Fire Alarm Call Point
- B-40 Fire Alarm Call Point
- B-41 Fire Alarm Call Point
- B-42 Fire Alarm Call Point
- B-43 Fire Alarm Call Point
- B-44 Fire Alarm Call Point
- B-45 Fire Alarm Call Point
- B-46 Fire Alarm Call Point
- B-47 Fire Alarm Call Point
- B-48 Fire Alarm Call Point
- B-49 Fire Alarm Call Point
- B-50 Fire Alarm Call Point

DATE: 11/03/2017

PROJECT: LINK APARTMENTS ZETLAND

TURNER

DATE: 11/03/2017

PROJECT: LINK APARTMENTS ZETLAND

TURNER

DATE: 11/03/2017

PROJECT: LINK APARTMENTS ZETLAND

TURNER

DATE: 11/03/2017

PROJECT: LINK APARTMENTS ZETLAND

TURNER

DATE: 11/03/2017

PROJECT: LINK APARTMENTS ZETLAND

TURNER

DATE: 11/03/2017

PROJECT: LINK APARTMENTS ZETLAND

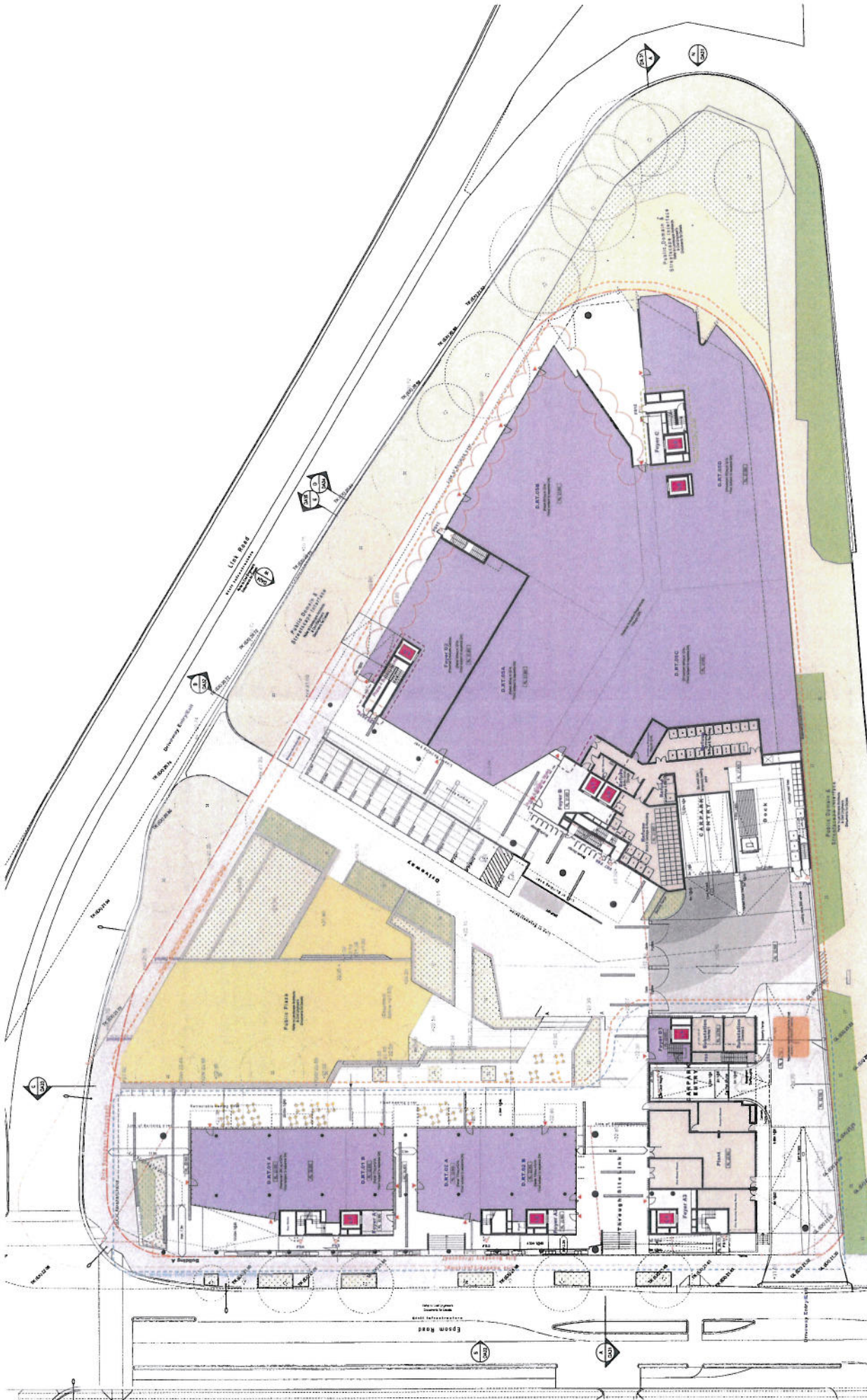
TURNER

DATE: 11/03/2017

PROJECT: LINK APARTMENTS ZETLAND

TURNER

ATTACHMENT A



KEY PLAN:

- APPROVED
- LINK EPSOM
- APPROVED
- LINK EPSOM

LEGEND: (Refer to site for full description of Materials & Finishes)

- AP: As per... (Material/Finish)
- BP: Blue Paint
- CP: Concrete
- DP: Dark Grey
- EP: External Paint
- FP: Floor Finish
- GP: Glass
- HP: Hardwood
- IP: Insulation
- JP: Joinery
- KP: Kitchen
- LP: Landscape
- MP: Metal
- NP: Noise Barrier
- OP: On-Site Storage
- PP: Plant
- QP: Quarry
- RP: Road
- SP: Signage
- TP: Trench
- UP: Underpinning
- VP: Vertical
- WP: Water
- XP: External Wall
- YP: Yards
- ZP: Zone

GENERAL NOTES:

1. All dimensions are in meters unless otherwise stated.
2. The site is shown as a single unit.
3. The site is shown as a single unit.
4. The site is shown as a single unit.
5. The site is shown as a single unit.

DATE: 11/03/2017

SCALE: 1:1000

PROJECT: LINK EPSOM

CLIENT: LINK EPSOM

ARCHITECT: TURNER

ATTACHMENT A



KEY PLAN:

3P	3rd Floor
2F	2nd Floor
1F	1st Floor
0F	Ground Floor
BT	Basement
GF	Garage/Gym
LF	Lift
ST	Staircase
STP	Staircase Platform
ET	Elevator
ST	Stair
ST	Staircase
ST	Staircase
ST	Staircase
ST	Staircase
ST	Staircase
ST	Staircase
ST	Staircase
ST	Staircase
ST	Staircase

LEGEND: Refer to O&M for detailed description of materials & finishes

111	Light Grey
112	Light Grey
113	Light Grey
114	Light Grey
115	Light Grey
116	Light Grey
117	Light Grey
118	Light Grey
119	Light Grey
120	Light Grey
121	Light Grey
122	Light Grey
123	Light Grey
124	Light Grey
125	Light Grey
126	Light Grey
127	Light Grey
128	Light Grey
129	Light Grey
130	Light Grey
131	Light Grey
132	Light Grey
133	Light Grey
134	Light Grey
135	Light Grey
136	Light Grey
137	Light Grey
138	Light Grey
139	Light Grey
140	Light Grey
141	Light Grey
142	Light Grey
143	Light Grey
144	Light Grey
145	Light Grey
146	Light Grey
147	Light Grey
148	Light Grey
149	Light Grey
150	Light Grey
151	Light Grey
152	Light Grey
153	Light Grey
154	Light Grey
155	Light Grey
156	Light Grey
157	Light Grey
158	Light Grey
159	Light Grey
160	Light Grey
161	Light Grey
162	Light Grey
163	Light Grey
164	Light Grey
165	Light Grey
166	Light Grey
167	Light Grey
168	Light Grey
169	Light Grey
170	Light Grey
171	Light Grey
172	Light Grey
173	Light Grey
174	Light Grey
175	Light Grey
176	Light Grey
177	Light Grey
178	Light Grey
179	Light Grey
180	Light Grey
181	Light Grey
182	Light Grey
183	Light Grey
184	Light Grey
185	Light Grey
186	Light Grey
187	Light Grey
188	Light Grey
189	Light Grey
190	Light Grey
191	Light Grey
192	Light Grey
193	Light Grey
194	Light Grey
195	Light Grey
196	Light Grey
197	Light Grey
198	Light Grey
199	Light Grey
200	Light Grey

KEY PLAN:

1	Level 1
2	Level 2
3	Level 3
4	Level 4
5	Level 5
6	Level 6
7	Level 7
8	Level 8
9	Level 9
10	Level 10
11	Level 11
12	Level 12
13	Level 13
14	Level 14
15	Level 15
16	Level 16
17	Level 17
18	Level 18
19	Level 19
20	Level 20
21	Level 21
22	Level 22
23	Level 23
24	Level 24
25	Level 25
26	Level 26
27	Level 27
28	Level 28
29	Level 29
30	Level 30
31	Level 31
32	Level 32
33	Level 33
34	Level 34
35	Level 35
36	Level 36
37	Level 37
38	Level 38
39	Level 39
40	Level 40
41	Level 41
42	Level 42
43	Level 43
44	Level 44
45	Level 45
46	Level 46
47	Level 47
48	Level 48
49	Level 49
50	Level 50

KEY PLAN:

1	Level 1
2	Level 2
3	Level 3
4	Level 4
5	Level 5
6	Level 6
7	Level 7
8	Level 8
9	Level 9
10	Level 10
11	Level 11
12	Level 12
13	Level 13
14	Level 14
15	Level 15
16	Level 16
17	Level 17
18	Level 18
19	Level 19
20	Level 20
21	Level 21
22	Level 22
23	Level 23
24	Level 24
25	Level 25
26	Level 26
27	Level 27
28	Level 28
29	Level 29
30	Level 30
31	Level 31
32	Level 32
33	Level 33
34	Level 34
35	Level 35
36	Level 36
37	Level 37
38	Level 38
39	Level 39
40	Level 40
41	Level 41
42	Level 42
43	Level 43
44	Level 44
45	Level 45
46	Level 46
47	Level 47
48	Level 48
49	Level 49
50	Level 50

LINK
 LINCOLN ZETLAND
 PROJECT NO: 11039
 DATE: 03/05/2017
 SCALE: 1:500
 DRAWN BY: *[Signature]*
 CHECKED BY: *[Signature]*
 PROJECT MANAGER: *[Signature]*
 SITE MANAGER: *[Signature]*
 DESIGNER: *[Signature]*
 ARCHITECT: *[Signature]*
 ENGINEER: *[Signature]*
 LANDSCAPE ARCHITECT: *[Signature]*
 PLANNING: *[Signature]*
 LEGAL: *[Signature]*
 FINANCE: *[Signature]*
 MARKETING: *[Signature]*
 SALES: *[Signature]*
 CUSTOMER SERVICE: *[Signature]*
 PROJECT SUPPORT: *[Signature]*
 CLIENT: *[Signature]*

ATTACHMENT A



NEW PLAN:

LEGEND (Refer to D217 for detailed description of Materials & Finishes)

1	Asphalt	10	Concrete Slab	19	Concrete Slab
2	Concrete Slab	11	Concrete Slab	20	Concrete Slab
3	Concrete Slab	12	Concrete Slab	21	Concrete Slab
4	Concrete Slab	13	Concrete Slab	22	Concrete Slab
5	Concrete Slab	14	Concrete Slab	23	Concrete Slab
6	Concrete Slab	15	Concrete Slab	24	Concrete Slab
7	Concrete Slab	16	Concrete Slab	25	Concrete Slab
8	Concrete Slab	17	Concrete Slab	26	Concrete Slab
9	Concrete Slab	18	Concrete Slab	27	Concrete Slab
10	Concrete Slab	19	Concrete Slab	28	Concrete Slab
11	Concrete Slab	20	Concrete Slab	29	Concrete Slab
12	Concrete Slab	21	Concrete Slab	30	Concrete Slab
13	Concrete Slab	22	Concrete Slab	31	Concrete Slab
14	Concrete Slab	23	Concrete Slab	32	Concrete Slab
15	Concrete Slab	24	Concrete Slab	33	Concrete Slab
16	Concrete Slab	25	Concrete Slab	34	Concrete Slab
17	Concrete Slab	26	Concrete Slab	35	Concrete Slab
18	Concrete Slab	27	Concrete Slab	36	Concrete Slab
19	Concrete Slab	28	Concrete Slab	37	Concrete Slab
20	Concrete Slab	29	Concrete Slab	38	Concrete Slab
21	Concrete Slab	30	Concrete Slab	39	Concrete Slab
22	Concrete Slab	31	Concrete Slab	40	Concrete Slab
23	Concrete Slab	32	Concrete Slab	41	Concrete Slab
24	Concrete Slab	33	Concrete Slab	42	Concrete Slab
25	Concrete Slab	34	Concrete Slab	43	Concrete Slab
26	Concrete Slab	35	Concrete Slab	44	Concrete Slab
27	Concrete Slab	36	Concrete Slab	45	Concrete Slab
28	Concrete Slab	37	Concrete Slab	46	Concrete Slab
29	Concrete Slab	38	Concrete Slab	47	Concrete Slab
30	Concrete Slab	39	Concrete Slab	48	Concrete Slab
31	Concrete Slab	40	Concrete Slab	49	Concrete Slab
32	Concrete Slab	41	Concrete Slab	50	Concrete Slab
33	Concrete Slab	42	Concrete Slab	51	Concrete Slab
34	Concrete Slab	43	Concrete Slab	52	Concrete Slab
35	Concrete Slab	44	Concrete Slab	53	Concrete Slab
36	Concrete Slab	45	Concrete Slab	54	Concrete Slab
37	Concrete Slab	46	Concrete Slab	55	Concrete Slab
38	Concrete Slab	47	Concrete Slab	56	Concrete Slab
39	Concrete Slab	48	Concrete Slab	57	Concrete Slab
40	Concrete Slab	49	Concrete Slab	58	Concrete Slab
41	Concrete Slab	50	Concrete Slab	59	Concrete Slab
42	Concrete Slab	51	Concrete Slab	60	Concrete Slab
43	Concrete Slab	52	Concrete Slab	61	Concrete Slab
44	Concrete Slab	53	Concrete Slab	62	Concrete Slab
45	Concrete Slab	54	Concrete Slab	63	Concrete Slab
46	Concrete Slab	55	Concrete Slab	64	Concrete Slab
47	Concrete Slab	56	Concrete Slab	65	Concrete Slab
48	Concrete Slab	57	Concrete Slab	66	Concrete Slab
49	Concrete Slab	58	Concrete Slab	67	Concrete Slab
50	Concrete Slab	59	Concrete Slab	68	Concrete Slab
51	Concrete Slab	60	Concrete Slab	69	Concrete Slab
52	Concrete Slab	61	Concrete Slab	70	Concrete Slab
53	Concrete Slab	62	Concrete Slab	71	Concrete Slab
54	Concrete Slab	63	Concrete Slab	72	Concrete Slab
55	Concrete Slab	64	Concrete Slab	73	Concrete Slab
56	Concrete Slab	65	Concrete Slab	74	Concrete Slab
57	Concrete Slab	66	Concrete Slab	75	Concrete Slab
58	Concrete Slab	67	Concrete Slab	76	Concrete Slab
59	Concrete Slab	68	Concrete Slab	77	Concrete Slab
60	Concrete Slab	69	Concrete Slab	78	Concrete Slab
61	Concrete Slab	70	Concrete Slab	79	Concrete Slab
62	Concrete Slab	71	Concrete Slab	80	Concrete Slab
63	Concrete Slab	72	Concrete Slab	81	Concrete Slab
64	Concrete Slab	73	Concrete Slab	82	Concrete Slab
65	Concrete Slab	74	Concrete Slab	83	Concrete Slab
66	Concrete Slab	75	Concrete Slab	84	Concrete Slab
67	Concrete Slab	76	Concrete Slab	85	Concrete Slab
68	Concrete Slab	77	Concrete Slab	86	Concrete Slab
69	Concrete Slab	78	Concrete Slab	87	Concrete Slab
70	Concrete Slab	79	Concrete Slab	88	Concrete Slab
71	Concrete Slab	80	Concrete Slab	89	Concrete Slab
72	Concrete Slab	81	Concrete Slab	90	Concrete Slab
73	Concrete Slab	82	Concrete Slab	91	Concrete Slab
74	Concrete Slab	83	Concrete Slab	92	Concrete Slab
75	Concrete Slab	84	Concrete Slab	93	Concrete Slab
76	Concrete Slab	85	Concrete Slab	94	Concrete Slab
77	Concrete Slab	86	Concrete Slab	95	Concrete Slab
78	Concrete Slab	87	Concrete Slab	96	Concrete Slab
79	Concrete Slab	88	Concrete Slab	97	Concrete Slab
80	Concrete Slab	89	Concrete Slab	98	Concrete Slab
81	Concrete Slab	90	Concrete Slab	99	Concrete Slab
82	Concrete Slab	91	Concrete Slab	100	Concrete Slab

LINK ZETLAND

turner

11093

DA10

Level 01 Plan

15/10/2017 14:00:00

ATTACHMENT A



KEY PLAN:

- AP - Apartment
- BP - Bar/Pub
- BT - Boat
- BT2 - Boat Quay
- BT3 - Boat Quay
- BT4 - Boat Quay
- BT5 - Boat Quay
- BT6 - Boat Quay
- BT7 - Boat Quay
- BT8 - Boat Quay
- BT9 - Boat Quay
- BT10 - Boat Quay
- BT11 - Boat Quay
- BT12 - Boat Quay
- BT13 - Boat Quay
- BT14 - Boat Quay
- BT15 - Boat Quay
- BT16 - Boat Quay
- BT17 - Boat Quay
- BT18 - Boat Quay
- BT19 - Boat Quay
- BT20 - Boat Quay
- BT21 - Boat Quay
- BT22 - Boat Quay
- BT23 - Boat Quay
- BT24 - Boat Quay
- BT25 - Boat Quay
- BT26 - Boat Quay
- BT27 - Boat Quay
- BT28 - Boat Quay
- BT29 - Boat Quay
- BT30 - Boat Quay
- BT31 - Boat Quay
- BT32 - Boat Quay
- BT33 - Boat Quay
- BT34 - Boat Quay
- BT35 - Boat Quay
- BT36 - Boat Quay
- BT37 - Boat Quay
- BT38 - Boat Quay
- BT39 - Boat Quay
- BT40 - Boat Quay
- BT41 - Boat Quay
- BT42 - Boat Quay
- BT43 - Boat Quay
- BT44 - Boat Quay
- BT45 - Boat Quay
- BT46 - Boat Quay
- BT47 - Boat Quay
- BT48 - Boat Quay
- BT49 - Boat Quay
- BT50 - Boat Quay
- BT51 - Boat Quay
- BT52 - Boat Quay
- BT53 - Boat Quay
- BT54 - Boat Quay
- BT55 - Boat Quay
- BT56 - Boat Quay
- BT57 - Boat Quay
- BT58 - Boat Quay
- BT59 - Boat Quay
- BT60 - Boat Quay
- BT61 - Boat Quay
- BT62 - Boat Quay
- BT63 - Boat Quay
- BT64 - Boat Quay
- BT65 - Boat Quay
- BT66 - Boat Quay
- BT67 - Boat Quay
- BT68 - Boat Quay
- BT69 - Boat Quay
- BT70 - Boat Quay
- BT71 - Boat Quay
- BT72 - Boat Quay
- BT73 - Boat Quay
- BT74 - Boat Quay
- BT75 - Boat Quay
- BT76 - Boat Quay
- BT77 - Boat Quay
- BT78 - Boat Quay
- BT79 - Boat Quay
- BT80 - Boat Quay
- BT81 - Boat Quay
- BT82 - Boat Quay
- BT83 - Boat Quay
- BT84 - Boat Quay
- BT85 - Boat Quay
- BT86 - Boat Quay
- BT87 - Boat Quay
- BT88 - Boat Quay
- BT89 - Boat Quay
- BT90 - Boat Quay
- BT91 - Boat Quay
- BT92 - Boat Quay
- BT93 - Boat Quay
- BT94 - Boat Quay
- BT95 - Boat Quay
- BT96 - Boat Quay
- BT97 - Boat Quay
- BT98 - Boat Quay
- BT99 - Boat Quay
- BT100 - Boat Quay

LEGEND: (Refer to DAT for detail description of Materials & Finishes)

- 1 - 1st Floor
- 2 - 2nd Floor
- 3 - 3rd Floor
- 4 - 4th Floor
- 5 - 5th Floor
- 6 - 6th Floor
- 7 - 7th Floor
- 8 - 8th Floor
- 9 - 9th Floor
- 10 - 10th Floor
- 11 - 11th Floor
- 12 - 12th Floor
- 13 - 13th Floor
- 14 - 14th Floor
- 15 - 15th Floor
- 16 - 16th Floor
- 17 - 17th Floor
- 18 - 18th Floor
- 19 - 19th Floor
- 20 - 20th Floor
- 21 - 21st Floor
- 22 - 22nd Floor
- 23 - 23rd Floor
- 24 - 24th Floor
- 25 - 25th Floor
- 26 - 26th Floor
- 27 - 27th Floor
- 28 - 28th Floor
- 29 - 29th Floor
- 30 - 30th Floor
- 31 - 31st Floor
- 32 - 32nd Floor
- 33 - 33rd Floor
- 34 - 34th Floor
- 35 - 35th Floor
- 36 - 36th Floor
- 37 - 37th Floor
- 38 - 38th Floor
- 39 - 39th Floor
- 40 - 40th Floor
- 41 - 41st Floor
- 42 - 42nd Floor
- 43 - 43rd Floor
- 44 - 44th Floor
- 45 - 45th Floor
- 46 - 46th Floor
- 47 - 47th Floor
- 48 - 48th Floor
- 49 - 49th Floor
- 50 - 50th Floor
- 51 - 51st Floor
- 52 - 52nd Floor
- 53 - 53rd Floor
- 54 - 54th Floor
- 55 - 55th Floor
- 56 - 56th Floor
- 57 - 57th Floor
- 58 - 58th Floor
- 59 - 59th Floor
- 60 - 60th Floor
- 61 - 61st Floor
- 62 - 62nd Floor
- 63 - 63rd Floor
- 64 - 64th Floor
- 65 - 65th Floor
- 66 - 66th Floor
- 67 - 67th Floor
- 68 - 68th Floor
- 69 - 69th Floor
- 70 - 70th Floor
- 71 - 71st Floor
- 72 - 72nd Floor
- 73 - 73rd Floor
- 74 - 74th Floor
- 75 - 75th Floor
- 76 - 76th Floor
- 77 - 77th Floor
- 78 - 78th Floor
- 79 - 79th Floor
- 80 - 80th Floor
- 81 - 81st Floor
- 82 - 82nd Floor
- 83 - 83rd Floor
- 84 - 84th Floor
- 85 - 85th Floor
- 86 - 86th Floor
- 87 - 87th Floor
- 88 - 88th Floor
- 89 - 89th Floor
- 90 - 90th Floor
- 91 - 91st Floor
- 92 - 92nd Floor
- 93 - 93rd Floor
- 94 - 94th Floor
- 95 - 95th Floor
- 96 - 96th Floor
- 97 - 97th Floor
- 98 - 98th Floor
- 99 - 99th Floor
- 100 - 100th Floor

LINK
 25 Link Rd, 150-160 Easton Rd, Jubilee (2008-2011)
 Level 66 Plan

turner

11039
 DAT

ATTACHMENT A



KEY PLAN:

Legend: (Refer to DAT 1 for details description of Materials & Finishes)

01.01	01.02	01.03	01.04	01.05	01.06	01.07	01.08	01.09	01.10	01.11	01.12	01.13	01.14	01.15	01.16	01.17	01.18	01.19	01.20	01.21	01.22	01.23	01.24	01.25	01.26	01.27	01.28	01.29	01.30	01.31	01.32	01.33	01.34	01.35	01.36	01.37	01.38	01.39	01.40	01.41	01.42	01.43	01.44	01.45	01.46	01.47	01.48	01.49	01.50
01.01	01.02	01.03	01.04	01.05	01.06	01.07	01.08	01.09	01.10	01.11	01.12	01.13	01.14	01.15	01.16	01.17	01.18	01.19	01.20	01.21	01.22	01.23	01.24	01.25	01.26	01.27	01.28	01.29	01.30	01.31	01.32	01.33	01.34	01.35	01.36	01.37	01.38	01.39	01.40	01.41	01.42	01.43	01.44	01.45	01.46	01.47	01.48	01.49	01.50

Legend: (Refer to DAT 1 for details description of Materials & Finishes)

01.01	01.02	01.03	01.04	01.05	01.06	01.07	01.08	01.09	01.10	01.11	01.12	01.13	01.14	01.15	01.16	01.17	01.18	01.19	01.20	01.21	01.22	01.23	01.24	01.25	01.26	01.27	01.28	01.29	01.30	01.31	01.32	01.33	01.34	01.35	01.36	01.37	01.38	01.39	01.40	01.41	01.42	01.43	01.44	01.45	01.46	01.47	01.48	01.49	01.50
01.01	01.02	01.03	01.04	01.05	01.06	01.07	01.08	01.09	01.10	01.11	01.12	01.13	01.14	01.15	01.16	01.17	01.18	01.19	01.20	01.21	01.22	01.23	01.24	01.25	01.26	01.27	01.28	01.29	01.30	01.31	01.32	01.33	01.34	01.35	01.36	01.37	01.38	01.39	01.40	01.41	01.42	01.43	01.44	01.45	01.46	01.47	01.48	01.49	01.50

ATTACHMENT A



LINK
RESIDENTIAL

turner

Project No. 11000
Date: 01/11/2024

LEGEND: Refer to DAT for detail description of Materials & Finishes.

AP	Asphalt	CP	Courtyard	DP	Driveway	EP	Electric	FP	Furniture	GP	Grass	HP	Hardwood	IP	Iron	JP	Joint	KP	Kitchen	LP	Landscaping	MP	Masonry	NP	Natural	OP	Other	PP	Paving	RP	Road	SP	Site	TP	Tree	UP	Utility	VP	View	WP	Water	XP	Other	YP	Other	ZP	Other
----	---------	----	-----------	----	----------	----	----------	----	-----------	----	-------	----	----------	----	------	----	-------	----	---------	----	-------------	----	---------	----	---------	----	-------	----	--------	----	------	----	------	----	------	----	---------	----	------	----	-------	----	-------	----	-------	----	-------

Scale: 1:500
North Arrow

ATTACHMENT A



LINK
NEW ZEALAND

turner

LEGEND: Refer to D11 for detailed description of Materials & Finishes

- BF Boundary
- CF Contour
- SI2 Slope 1:2
- SI3 Slope 2:1
- SI4 Slope 3:1
- SI5 Slope 4:1
- SI6 Slope 5:1
- SI7 Slope 6:1
- SI8 Slope 7:1
- SI9 Slope 8:1
- SI10 Slope 9:1
- SI11 Slope 10:1
- SI12 Slope 12:1
- SI13 Slope 15:1
- SI14 Slope 20:1
- SI15 Slope 25:1
- SI16 Slope 30:1
- SI17 Slope 40:1
- SI18 Slope 50:1
- SI19 Slope 60:1
- SI20 Slope 75:1
- SI21 Slope 100:1
- SI22 Slope 120:1
- SI23 Slope 150:1
- SI24 Slope 200:1
- SI25 Slope 250:1
- SI26 Slope 300:1
- SI27 Slope 400:1
- SI28 Slope 500:1
- SI29 Slope 600:1
- SI30 Slope 750:1
- SI31 Slope 1000:1
- SI32 Slope 1200:1
- SI33 Slope 1500:1
- SI34 Slope 2000:1
- SI35 Slope 2500:1
- SI36 Slope 3000:1
- SI37 Slope 4000:1
- SI38 Slope 5000:1
- SI39 Slope 6000:1
- SI40 Slope 7500:1
- SI41 Slope 10000:1
- SI42 Slope 12000:1
- SI43 Slope 15000:1
- SI44 Slope 20000:1
- SI45 Slope 25000:1
- SI46 Slope 30000:1
- SI47 Slope 40000:1
- SI48 Slope 50000:1
- SI49 Slope 60000:1
- SI50 Slope 75000:1
- SI51 Slope 100000:1
- SI52 Slope 120000:1
- SI53 Slope 150000:1
- SI54 Slope 200000:1
- SI55 Slope 250000:1
- SI56 Slope 300000:1
- SI57 Slope 400000:1
- SI58 Slope 500000:1
- SI59 Slope 600000:1
- SI60 Slope 750000:1
- SI61 Slope 1000000:1
- SI62 Slope 1200000:1
- SI63 Slope 1500000:1
- SI64 Slope 2000000:1
- SI65 Slope 2500000:1
- SI66 Slope 3000000:1
- SI67 Slope 4000000:1
- SI68 Slope 5000000:1
- SI69 Slope 6000000:1
- SI70 Slope 7500000:1
- SI71 Slope 10000000:1
- SI72 Slope 12000000:1
- SI73 Slope 15000000:1
- SI74 Slope 20000000:1
- SI75 Slope 25000000:1
- SI76 Slope 30000000:1
- SI77 Slope 40000000:1
- SI78 Slope 50000000:1
- SI79 Slope 60000000:1
- SI80 Slope 75000000:1
- SI81 Slope 100000000:1
- SI82 Slope 120000000:1
- SI83 Slope 150000000:1
- SI84 Slope 200000000:1
- SI85 Slope 250000000:1
- SI86 Slope 300000000:1
- SI87 Slope 400000000:1
- SI88 Slope 500000000:1
- SI89 Slope 600000000:1
- SI90 Slope 750000000:1
- SI91 Slope 1000000000:1
- SI92 Slope 1200000000:1
- SI93 Slope 1500000000:1
- SI94 Slope 2000000000:1
- SI95 Slope 2500000000:1
- SI96 Slope 3000000000:1
- SI97 Slope 4000000000:1
- SI98 Slope 5000000000:1
- SI99 Slope 6000000000:1
- SI100 Slope 7500000000:1
- SI101 Slope 10000000000:1
- SI102 Slope 12000000000:1
- SI103 Slope 15000000000:1
- SI104 Slope 20000000000:1
- SI105 Slope 25000000000:1
- SI106 Slope 30000000000:1
- SI107 Slope 40000000000:1
- SI108 Slope 50000000000:1
- SI109 Slope 60000000000:1
- SI110 Slope 75000000000:1
- SI111 Slope 100000000000:1
- SI112 Slope 120000000000:1
- SI113 Slope 150000000000:1
- SI114 Slope 200000000000:1
- SI115 Slope 250000000000:1
- SI116 Slope 300000000000:1
- SI117 Slope 400000000000:1
- SI118 Slope 500000000000:1
- SI119 Slope 600000000000:1
- SI120 Slope 750000000000:1
- SI121 Slope 1000000000000:1
- SI122 Slope 1200000000000:1
- SI123 Slope 1500000000000:1
- SI124 Slope 2000000000000:1
- SI125 Slope 2500000000000:1
- SI126 Slope 3000000000000:1
- SI127 Slope 4000000000000:1
- SI128 Slope 5000000000000:1
- SI129 Slope 6000000000000:1
- SI130 Slope 7500000000000:1
- SI131 Slope 10000000000000:1
- SI132 Slope 12000000000000:1
- SI133 Slope 15000000000000:1
- SI134 Slope 20000000000000:1
- SI135 Slope 25000000000000:1
- SI136 Slope 30000000000000:1
- SI137 Slope 40000000000000:1
- SI138 Slope 50000000000000:1
- SI139 Slope 60000000000000:1
- SI140 Slope 75000000000000:1
- SI141 Slope 100000000000000:1
- SI142 Slope 120000000000000:1
- SI143 Slope 150000000000000:1
- SI144 Slope 200000000000000:1
- SI145 Slope 250000000000000:1
- SI146 Slope 300000000000000:1
- SI147 Slope 400000000000000:1
- SI148 Slope 500000000000000:1
- SI149 Slope 600000000000000:1
- SI150 Slope 750000000000000:1
- SI151 Slope 1000000000000000:1
- SI152 Slope 1200000000000000:1
- SI153 Slope 1500000000000000:1
- SI154 Slope 2000000000000000:1
- SI155 Slope 2500000000000000:1
- SI156 Slope 3000000000000000:1
- SI157 Slope 4000000000000000:1
- SI158 Slope 5000000000000000:1
- SI159 Slope 6000000000000000:1
- SI160 Slope 7500000000000000:1
- SI161 Slope 10000000000000000:1
- SI162 Slope 12000000000000000:1
- SI163 Slope 15000000000000000:1
- SI164 Slope 20000000000000000:1
- SI165 Slope 25000000000000000:1
- SI166 Slope 30000000000000000:1
- SI167 Slope 40000000000000000:1
- SI168 Slope 50000000000000000:1
- SI169 Slope 60000000000000000:1
- SI170 Slope 75000000000000000:1
- SI171 Slope 100000000000000000:1
- SI172 Slope 120000000000000000:1
- SI173 Slope 150000000000000000:1
- SI174 Slope 200000000000000000:1
- SI175 Slope 250000000000000000:1
- SI176 Slope 300000000000000000:1
- SI177 Slope 400000000000000000:1
- SI178 Slope 500000000000000000:1
- SI179 Slope 600000000000000000:1
- SI180 Slope 750000000000000000:1
- SI181 Slope 1000000000000000000:1
- SI182 Slope 1200000000000000000:1
- SI183 Slope 1500000000000000000:1
- SI184 Slope 2000000000000000000:1
- SI185 Slope 2500000000000000000:1
- SI186 Slope 3000000000000000000:1
- SI187 Slope 4000000000000000000:1
- SI188 Slope 5000000000000000000:1
- SI189 Slope 6000000000000000000:1
- SI190 Slope 7500000000000000000:1
- SI191 Slope 10000000000000000000:1
- SI192 Slope 12000000000000000000:1
- SI193 Slope 15000000000000000000:1
- SI194 Slope 20000000000000000000:1
- SI195 Slope 25000000000000000000:1
- SI196 Slope 30000000000000000000:1
- SI197 Slope 40000000000000000000:1
- SI198 Slope 50000000000000000000:1
- SI199 Slope 60000000000000000000:1
- SI200 Slope 75000000000000000000:1

Scale: 1:500

Date: 11/09/2023

Author: Turney

Client: Link Property Group Pty Ltd

Project: Link Property Group Pty Ltd

Site: Link Property Group Pty Ltd

ATTACHMENT A



KEY PLAN:

- A - 11 Apartments
- B - 2 Shop Units
- B0 - Shop Units
- B1 - Shop Units
- B2 - Shop Units
- B3 - Shop Units
- B4 - Shop Units
- B5 - Shop Units
- B6 - Shop Units
- B7 - Shop Units
- B8 - Shop Units
- B9 - Shop Units
- B10 - Shop Units
- C - Car Park
- D - Deck
- E - Entry
- F - Finishes
- G - Garden
- H - Hardstanding
- I - Internal
- J - Jetty
- K - Kitchen
- L - Landscaping
- M - Movable
- N - North
- O - Office
- P - Parking
- Q - Quarry
- R - Road
- S - Service
- T - Terrace
- U - Utility
- V - Veranda
- W - Warehouse
- X - Work Area
- Y - Yard
- Z - Zone

LINK
15, Link Rd, 141 Epsom, Auckland 1060

LINK
Level 11 Plan

1039
Date: 14/05/2014
Scale: A3
Author: [unreadable]
Reviewer: [unreadable]
Status: [unreadable]

LINK
15, Link Rd, 141 Epsom, Auckland 1060

LINK
Level 11 Plan

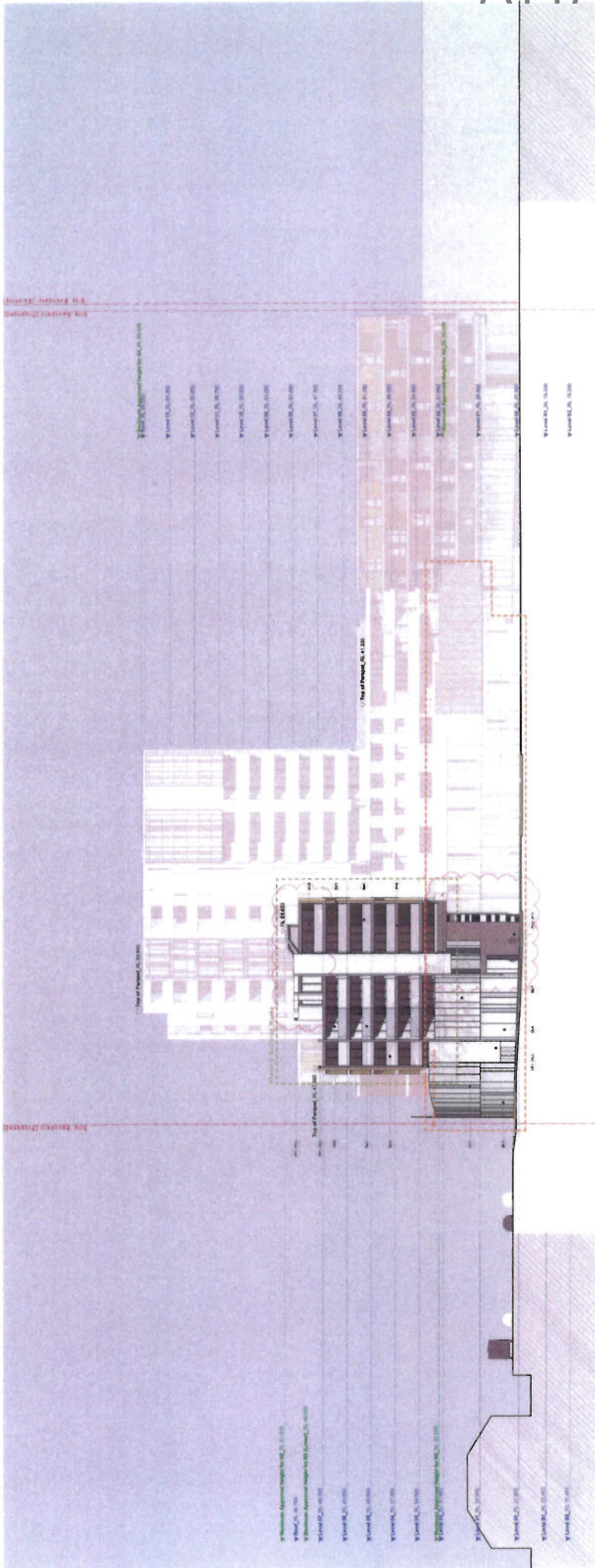
LINK
15, Link Rd, 141 Epsom, Auckland 1060


LINK
Level 11 Plan

LINK
15, Link Rd, 141 Epsom, Auckland 1060

LINK
Level 11 Plan




ATTACHMENT A



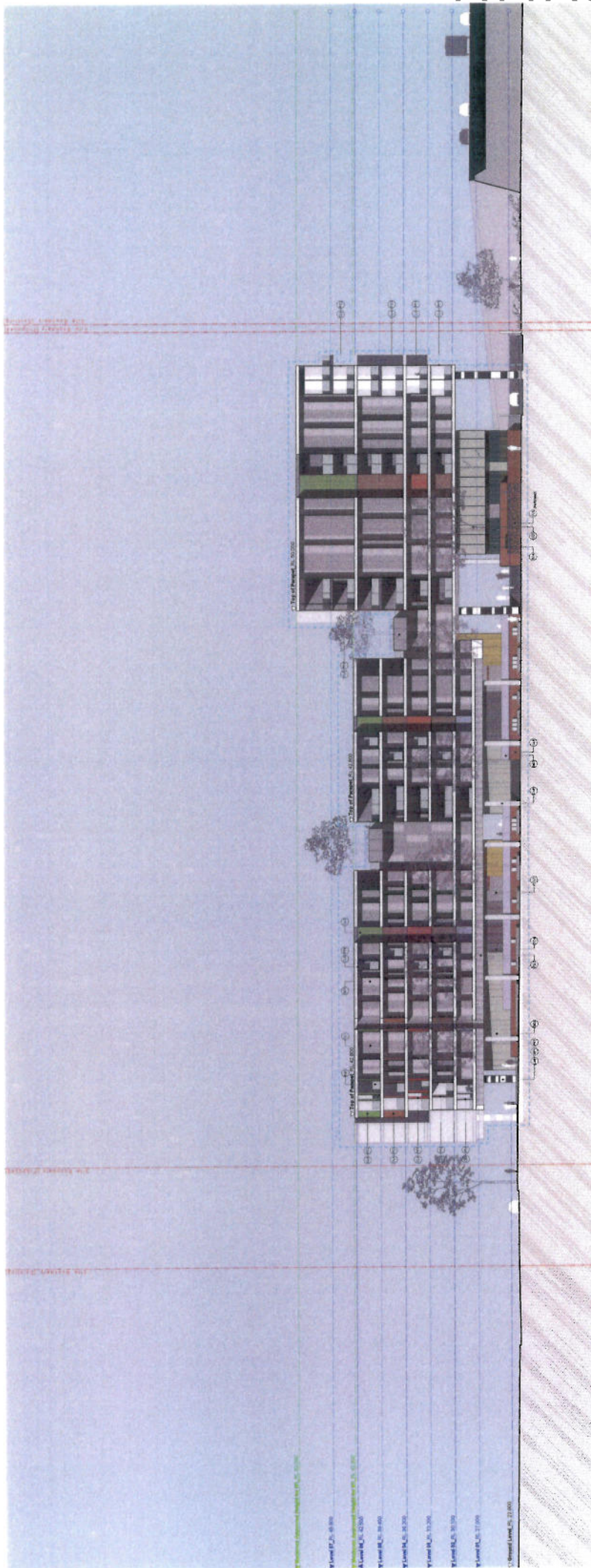
- KEY PLAN:**
- 
- LEGEND:** Materials & Finishes (Refer to DACT for detailed descriptions of Materials & Finishes)
- 1 Arroyo Type 12.0c
 - 2 Arroyo Type 12.0c
 - 3 Arroyo Type 12.0c
 - 4 Arroyo Type 12.0c
 - 5 Arroyo Type 12.0c
 - 6 Arroyo Type 12.0c
 - 7 Arroyo Type 12.0c
 - 8 Arroyo Type 12.0c
 - 9 Arroyo Type 12.0c
 - 10 Arroyo Type 12.0c
 - 11 Arroyo Type 12.0c
 - 12 Arroyo Type 12.0c
 - 13 Arroyo Type 12.0c
 - 14 Arroyo Type 12.0c
 - 15 Arroyo Type 12.0c
 - 16 Arroyo Type 12.0c
 - 17 Arroyo Type 12.0c
 - 18 Arroyo Type 12.0c
 - 19 Arroyo Type 12.0c
 - 20 Arroyo Type 12.0c
 - 21 Arroyo Type 12.0c
 - 22 Arroyo Type 12.0c
 - 23 Arroyo Type 12.0c
 - 24 Arroyo Type 12.0c
 - 25 Arroyo Type 12.0c
 - 26 Arroyo Type 12.0c
 - 27 Arroyo Type 12.0c
 - 28 Arroyo Type 12.0c
 - 29 Arroyo Type 12.0c
 - 30 Arroyo Type 12.0c
 - 31 Arroyo Type 12.0c
 - 32 Arroyo Type 12.0c
 - 33 Arroyo Type 12.0c
 - 34 Arroyo Type 12.0c
 - 35 Arroyo Type 12.0c
 - 36 Arroyo Type 12.0c
 - 37 Arroyo Type 12.0c
 - 38 Arroyo Type 12.0c
 - 39 Arroyo Type 12.0c
 - 40 Arroyo Type 12.0c
 - 41 Arroyo Type 12.0c
 - 42 Arroyo Type 12.0c
 - 43 Arroyo Type 12.0c
 - 44 Arroyo Type 12.0c
 - 45 Arroyo Type 12.0c
 - 46 Arroyo Type 12.0c
 - 47 Arroyo Type 12.0c
 - 48 Arroyo Type 12.0c
 - 49 Arroyo Type 12.0c
 - 50 Arroyo Type 12.0c
 - 51 Arroyo Type 12.0c
 - 52 Arroyo Type 12.0c
 - 53 Arroyo Type 12.0c
 - 54 Arroyo Type 12.0c
 - 55 Arroyo Type 12.0c
 - 56 Arroyo Type 12.0c
 - 57 Arroyo Type 12.0c
 - 58 Arroyo Type 12.0c
 - 59 Arroyo Type 12.0c
 - 60 Arroyo Type 12.0c
 - 61 Arroyo Type 12.0c
 - 62 Arroyo Type 12.0c
 - 63 Arroyo Type 12.0c
 - 64 Arroyo Type 12.0c
 - 65 Arroyo Type 12.0c
 - 66 Arroyo Type 12.0c
 - 67 Arroyo Type 12.0c
 - 68 Arroyo Type 12.0c
 - 69 Arroyo Type 12.0c
 - 70 Arroyo Type 12.0c
 - 71 Arroyo Type 12.0c
 - 72 Arroyo Type 12.0c
 - 73 Arroyo Type 12.0c
 - 74 Arroyo Type 12.0c
 - 75 Arroyo Type 12.0c
 - 76 Arroyo Type 12.0c
 - 77 Arroyo Type 12.0c
 - 78 Arroyo Type 12.0c
 - 79 Arroyo Type 12.0c
 - 80 Arroyo Type 12.0c
 - 81 Arroyo Type 12.0c
 - 82 Arroyo Type 12.0c
 - 83 Arroyo Type 12.0c
 - 84 Arroyo Type 12.0c
 - 85 Arroyo Type 12.0c
 - 86 Arroyo Type 12.0c
 - 87 Arroyo Type 12.0c
 - 88 Arroyo Type 12.0c
 - 89 Arroyo Type 12.0c
 - 90 Arroyo Type 12.0c
 - 91 Arroyo Type 12.0c
 - 92 Arroyo Type 12.0c
 - 93 Arroyo Type 12.0c
 - 94 Arroyo Type 12.0c
 - 95 Arroyo Type 12.0c
 - 96 Arroyo Type 12.0c
 - 97 Arroyo Type 12.0c
 - 98 Arroyo Type 12.0c
 - 99 Arroyo Type 12.0c
 - 100 Arroyo Type 12.0c

- 1 Press Building Walls
- 2 Press Building Walls (Dark Clad Only)
- 3 Press Building Walls
- 4 Press Building Walls

LINK
 15 Lindfield Way, Epsom, Auckland 1051
 North Elevation, Link Rd
 Prepared by: LINK
 Date: 11/09/2017
 Project: DACT No. 10109

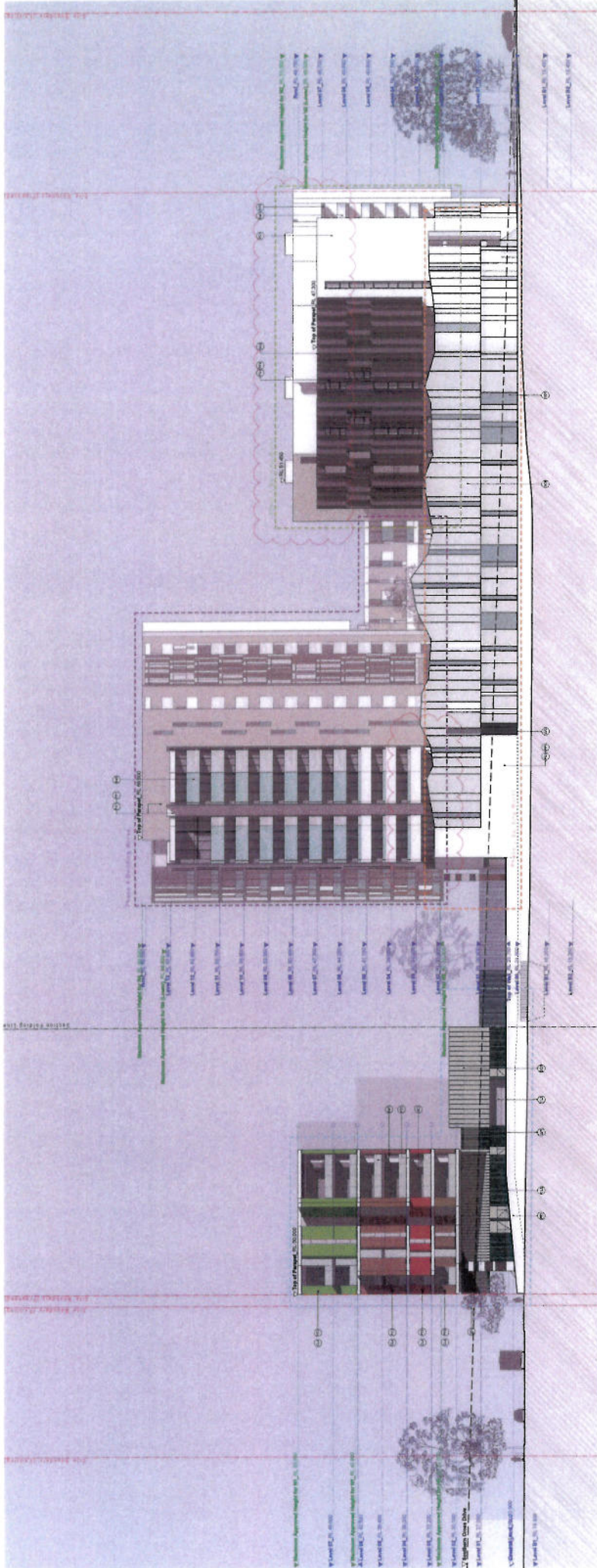
ATTACHMENT A



- Panel 1 (Dark Stone)
- Panel 2 (Light Stone)
- Panel 3 (Dark Stone)
- Panel 4 (Light Stone)
- Panel 5 (Dark Stone)
- Panel 6 (Light Stone)
- Panel 7 (Dark Stone)
- Panel 8 (Light Stone)
- Panel 9 (Dark Stone)
- Panel 10 (Light Stone)
- Panel 11 (Dark Stone)
- Panel 12 (Light Stone)
- Panel 13 (Dark Stone)
- Panel 14 (Light Stone)
- Panel 15 (Dark Stone)
- Panel 16 (Light Stone)
- Panel 17 (Dark Stone)
- Panel 18 (Light Stone)
- Panel 19 (Dark Stone)
- Panel 20 (Light Stone)
- Panel 21 (Dark Stone)
- Panel 22 (Light Stone)
- Panel 23 (Dark Stone)
- Panel 24 (Light Stone)
- Panel 25 (Dark Stone)
- Panel 26 (Light Stone)
- Panel 27 (Dark Stone)
- Panel 28 (Light Stone)
- Panel 29 (Dark Stone)
- Panel 30 (Light Stone)
- Panel 31 (Dark Stone)
- Panel 32 (Light Stone)
- Panel 33 (Dark Stone)
- Panel 34 (Light Stone)
- Panel 35 (Dark Stone)
- Panel 36 (Light Stone)
- Panel 37 (Dark Stone)
- Panel 38 (Light Stone)
- Panel 39 (Dark Stone)
- Panel 40 (Light Stone)
- Panel 41 (Dark Stone)
- Panel 42 (Light Stone)
- Panel 43 (Dark Stone)
- Panel 44 (Light Stone)
- Panel 45 (Dark Stone)
- Panel 46 (Light Stone)
- Panel 47 (Dark Stone)
- Panel 48 (Light Stone)
- Panel 49 (Dark Stone)
- Panel 50 (Light Stone)

- LEGEND: Materials & Finishes (Refer to DAT) for detailed description of Materials & Finishes**
- ① Walling - 1.2m
 - ② Concrete - 1.2m
 - ③ Glass - 1.2m
 - ④ Brick - 1.2m
 - ⑤ Stone - 1.2m
 - ⑥ Metal - 1.2m
 - ⑦ Timber - 1.2m
 - ⑧ Plaster - 1.2m
 - ⑨ Paint - 1.2m
 - ⑩ Tiles - 1.2m
 - ⑪ Carpet - 1.2m
 - ⑫ Floor - 1.2m
 - ⑬ Ceiling - 1.2m
 - ⑭ Lighting - 1.2m
 - ⑮ Signage - 1.2m
 - ⑯ Fencing - 1.2m
 - ⑰ Landscaping - 1.2m
 - ⑱ Other - 1.2m
 - ⑲ Detail - 1.2m
 - ⑳ Section - 1.2m
 - ㉑ Elevation - 1.2m
 - ㉒ Plan - 1.2m
 - ㉓ Section - 1.2m
 - ㉔ Elevation - 1.2m
 - ㉕ Plan - 1.2m
 - ㉖ Section - 1.2m
 - ㉗ Elevation - 1.2m
 - ㉘ Plan - 1.2m
 - ㉙ Section - 1.2m
 - ㉚ Elevation - 1.2m
 - ㉛ Plan - 1.2m
 - ㉜ Section - 1.2m
 - ㉝ Elevation - 1.2m
 - ㉞ Plan - 1.2m
 - ㉟ Section - 1.2m
 - ⓫ Elevation - 1.2m
 - ⓬ Plan - 1.2m
 - ⓭ Section - 1.2m
 - ⓮ Elevation - 1.2m
 - ⓯ Plan - 1.2m
 - ⓰ Section - 1.2m
 - ⓱ Elevation - 1.2m
 - ⓲ Plan - 1.2m
 - ⓳ Section - 1.2m
 - ⓴ Elevation - 1.2m
 - ⓵ Plan - 1.2m
 - ⓶ Section - 1.2m
 - ⓷ Elevation - 1.2m
 - ⓸ Plan - 1.2m
 - ⓹ Section - 1.2m
 - ⓺ Elevation - 1.2m
 - ⓻ Plan - 1.2m
 - ⓼ Section - 1.2m
 - ⓽ Elevation - 1.2m
 - ⓿ Plan - 1.2m
 - ⓿ Section - 1.2m

ATTACHMENT A



Proposed Development - Link

KEY PLAN:

LEGEND: Materials & Finishes (Refer to S471 for detailed description of Materials & Finishes)

① Heavy Clay Brick	② Concrete Structure (See 17 etc)	③ Ceramic Tiles (See 17 etc)	④ Glass (See 17 etc)	⑤ Steel Frame (See 17 etc)
⑥ Brickwork (See 17 etc)	⑦ Concrete (See 17 etc)	⑧ Ceramic Tiles (See 17 etc)	⑨ Glass (See 17 etc)	⑩ Steel Frame (See 17 etc)
⑪ Cladding (See 17 etc)	⑫ Concrete (See 17 etc)	⑬ Ceramic Tiles (See 17 etc)	⑭ Glass (See 17 etc)	⑮ Steel Frame (See 17 etc)

⑯ Glass (See 17 etc) ⑰ Concrete (See 17 etc) ⑱ Ceramic Tiles (See 17 etc) ⑲ Glass (See 17 etc) ⑳ Steel Frame (See 17 etc)

⑳ Glass (See 17 etc) ㉑ Concrete (See 17 etc) ㉒ Ceramic Tiles (See 17 etc) ㉓ Glass (See 17 etc) ㉔ Steel Frame (See 17 etc)

⑳ Glass (See 17 etc) ㉕ Concrete (See 17 etc) ㉖ Ceramic Tiles (See 17 etc) ㉗ Glass (See 17 etc) ㉘ Steel Frame (See 17 etc)

⑳ Glass (See 17 etc) ㉙ Concrete (See 17 etc) ㉚ Ceramic Tiles (See 17 etc) ㉛ Glass (See 17 etc) ㉜ Steel Frame (See 17 etc)

⑳ Glass (See 17 etc) ㉝ Concrete (See 17 etc) ㉞ Ceramic Tiles (See 17 etc) ㉟ Glass (See 17 etc) ㊱ Steel Frame (See 17 etc)

⑳ Glass (See 17 etc) ㊲ Concrete (See 17 etc) ㊳ Ceramic Tiles (See 17 etc) ㊴ Glass (See 17 etc) ㊵ Steel Frame (See 17 etc)

⑳ Glass (See 17 etc) ㊶ Concrete (See 17 etc) ㊷ Ceramic Tiles (See 17 etc) ㊸ Glass (See 17 etc) ㊹ Steel Frame (See 17 etc)

⑳ Glass (See 17 etc) ㊺ Concrete (See 17 etc) ㊻ Ceramic Tiles (See 17 etc) ㊼ Glass (See 17 etc) ㊽ Steel Frame (See 17 etc)

⑳ Glass (See 17 etc) ㊾ Concrete (See 17 etc) ㊿ Ceramic Tiles (See 17 etc) ㊿ Glass (See 17 etc) ㊿ Steel Frame (See 17 etc)

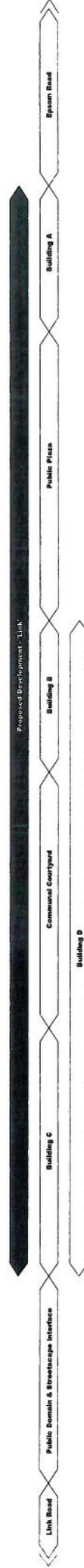
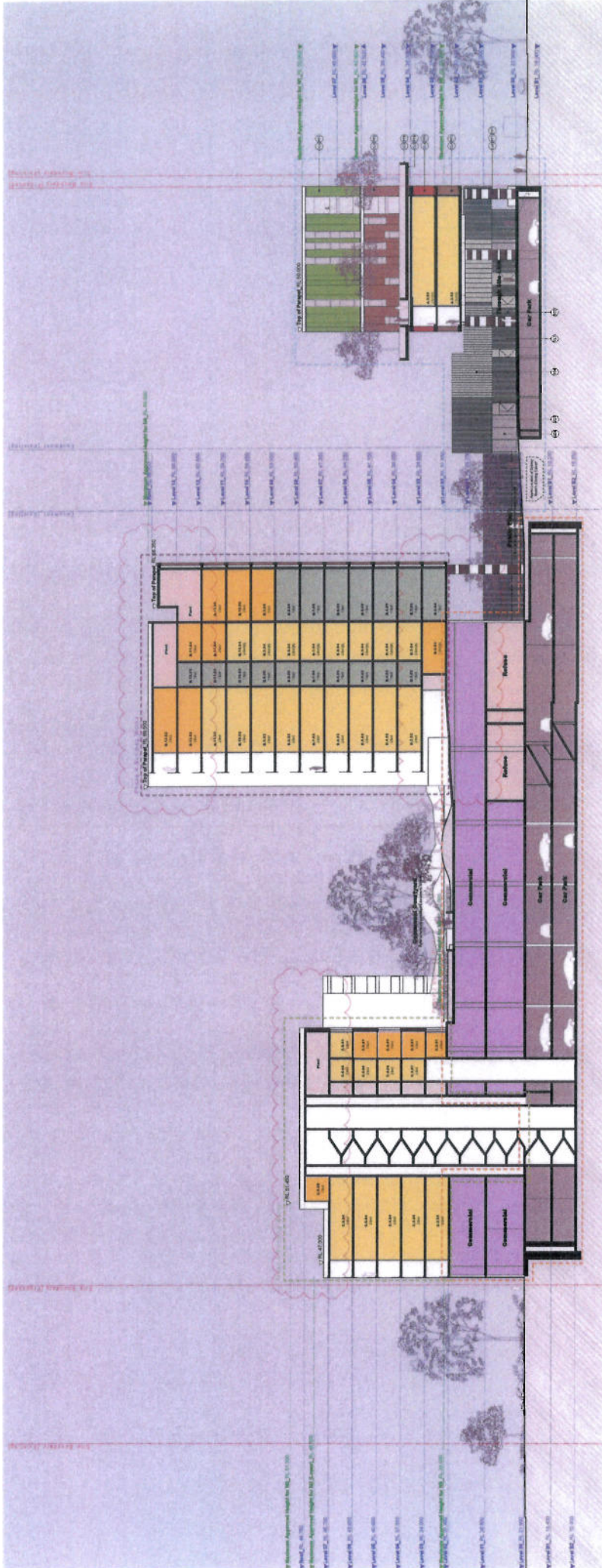
LINK

APPROVED DEVELOPMENT

turner

1009
DA23

ATTACHMENT A



LEGEND: Materials & Finishes (refer to DAT1 for detailed descriptions of Materials & Finishes)

- Phase 1 Building Mass
- Phase 2 Building Mass (incl. 4 Core Dty)
- Phase 3 Building Mass
- Phase 4 Building Mass

- Por Fyve (Sp. 2.6L)
- Por Fyve (Sp. 2.6L)
- Por Fyve (Sp. 2.6L)
- Por Fyve (Sp. 2.6L)

- Por Fyve (Sp. 2.6L)
- Por Fyve (Sp. 2.6L)
- Por Fyve (Sp. 2.6L)
- Por Fyve (Sp. 2.6L)

- Por Fyve (Sp. 2.6L)
- Por Fyve (Sp. 2.6L)
- Por Fyve (Sp. 2.6L)
- Por Fyve (Sp. 2.6L)

- Por Fyve (Sp. 2.6L)
- Por Fyve (Sp. 2.6L)
- Por Fyve (Sp. 2.6L)
- Por Fyve (Sp. 2.6L)

NOT TO SCALE

Project No: 1103
 Date: 06/01/2018
 Page No: 11

turner

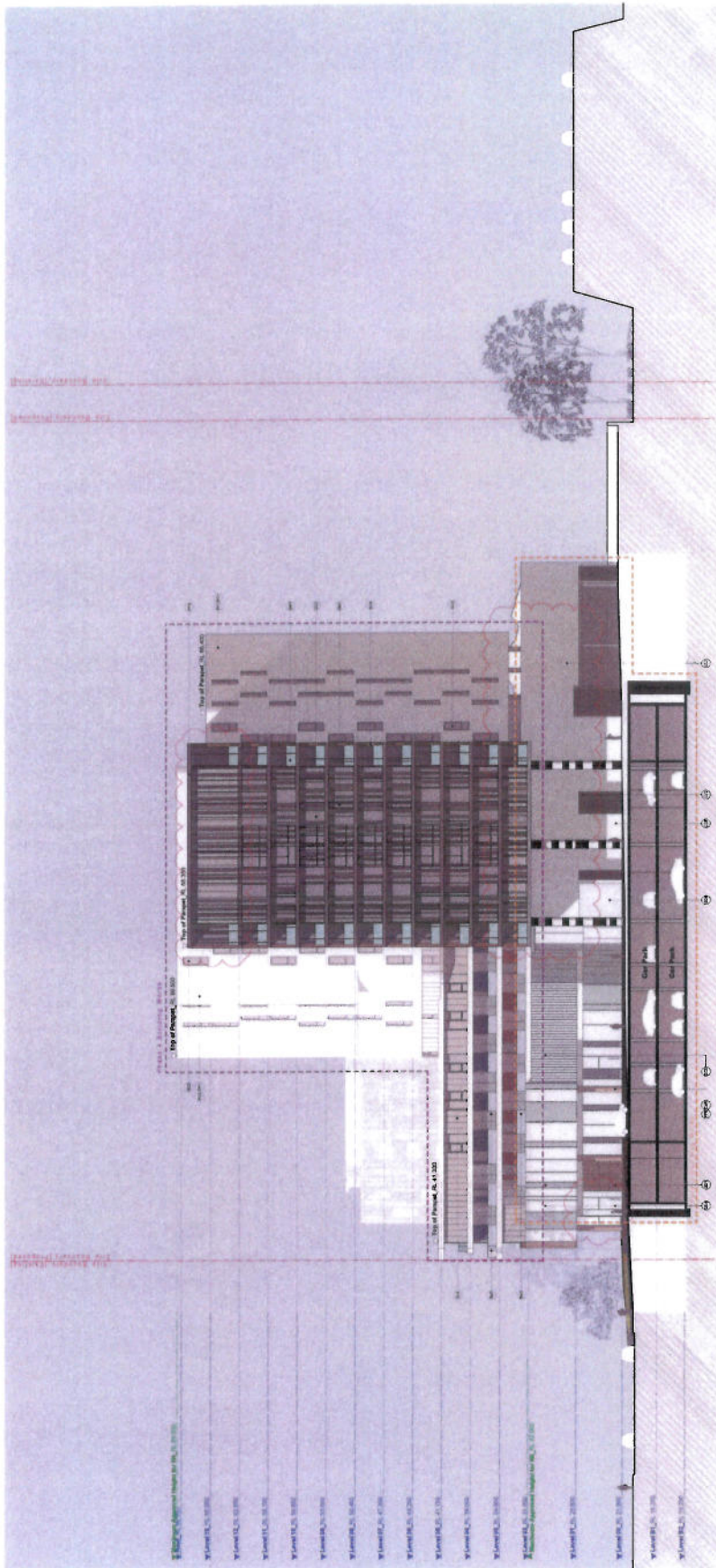
Proposed Development - Link

Building A Building B Building C Building D

Public Plaza Communal Courtyard

Link Road Public Domain & Streetscape Interface Epsom Road

ATTACHMENT A



- Legend:
 - Blue square: Glass
 - Orange square: Brick
 - Green square: Concrete
 - Yellow square: Wood
- Level markers:
 - 1:0.00
 - 1:1.00
 - 1:2.00
 - 1:3.00
 - 1:4.00
 - 1:5.00
 - 1:6.00
 - 1:7.00
 - 1:8.00
 - 1:9.00
 - 1:10.00
 - 1:11.00
 - 1:12.00
 - 1:13.00
 - 1:14.00
 - 1:15.00
 - 1:16.00
 - 1:17.00
 - 1:18.00
 - 1:19.00
 - 1:20.00
 - 1:21.00
 - 1:22.00
 - 1:23.00
 - 1:24.00
 - 1:25.00
 - 1:26.00
 - 1:27.00
 - 1:28.00
 - 1:29.00
 - 1:30.00
 - 1:31.00
 - 1:32.00
 - 1:33.00
 - 1:34.00
 - 1:35.00
 - 1:36.00
 - 1:37.00
 - 1:38.00
 - 1:39.00
 - 1:40.00
 - 1:41.00
 - 1:42.00
 - 1:43.00
 - 1:44.00
 - 1:45.00
 - 1:46.00
 - 1:47.00
 - 1:48.00
 - 1:49.00
 - 1:50.00
 - 1:51.00
 - 1:52.00
 - 1:53.00
 - 1:54.00
 - 1:55.00
 - 1:56.00
 - 1:57.00
 - 1:58.00
 - 1:59.00
 - 1:60.00
- Notes:
 - 1.00
 - 1.01
 - 1.02
 - 1.03
 - 1.04
 - 1.05
 - 1.06
 - 1.07
 - 1.08
 - 1.09
 - 1.10
 - 1.11
 - 1.12
 - 1.13
 - 1.14
 - 1.15
 - 1.16
 - 1.17
 - 1.18
 - 1.19
 - 1.20
 - 1.21
 - 1.22
 - 1.23
 - 1.24
 - 1.25
 - 1.26
 - 1.27
 - 1.28
 - 1.29
 - 1.30
 - 1.31
 - 1.32
 - 1.33
 - 1.34
 - 1.35
 - 1.36
 - 1.37
 - 1.38
 - 1.39
 - 1.40
 - 1.41
 - 1.42
 - 1.43
 - 1.44
 - 1.45
 - 1.46
 - 1.47
 - 1.48
 - 1.49
 - 1.50
 - 1.51
 - 1.52
 - 1.53
 - 1.54
 - 1.55
 - 1.56
 - 1.57
 - 1.58
 - 1.59
 - 1.60
 - 1.61
 - 1.62
 - 1.63
 - 1.64
 - 1.65
 - 1.66
 - 1.67
 - 1.68
 - 1.69
 - 1.70
 - 1.71
 - 1.72
 - 1.73
 - 1.74
 - 1.75
 - 1.76
 - 1.77
 - 1.78
 - 1.79
 - 1.80
 - 1.81
 - 1.82
 - 1.83
 - 1.84
 - 1.85
 - 1.86
 - 1.87
 - 1.88
 - 1.89
 - 1.90
 - 1.91
 - 1.92
 - 1.93
 - 1.94
 - 1.95
 - 1.96
 - 1.97
 - 1.98
 - 1.99
 - 2.00



Proposed Development - 'Link'
Building A
 South Dowling Street Link Road Serrano Square

- LEGEND: Materials & Finishes (Refer to DFP1 for more description of Materials & Finishes)**
- ① Army Blue 1/4" x 4" x 4" (Panel)
 - ② Concrete 1/4" x 4" x 4" (Panel)
 - ③ Green 1/4" x 4" x 4" (Panel)
 - ④ Grey 1/4" x 4" x 4" (Panel)
 - ⑤ Cream 1/4" x 4" x 4" (Panel)
 - ⑥ Cream 1/4" x 4" x 4" (Panel)
 - ⑦ Cream 1/4" x 4" x 4" (Panel)
 - ⑧ Cream 1/4" x 4" x 4" (Panel)
 - ⑨ Cream 1/4" x 4" x 4" (Panel)
 - ⑩ Cream 1/4" x 4" x 4" (Panel)
 - ⑪ Cream 1/4" x 4" x 4" (Panel)
 - ⑫ Cream 1/4" x 4" x 4" (Panel)
 - ⑬ Cream 1/4" x 4" x 4" (Panel)
 - ⑭ Cream 1/4" x 4" x 4" (Panel)
 - ⑮ Cream 1/4" x 4" x 4" (Panel)
 - ⑯ Cream 1/4" x 4" x 4" (Panel)
 - ⑰ Cream 1/4" x 4" x 4" (Panel)
 - ⑱ Cream 1/4" x 4" x 4" (Panel)
 - ⑲ Cream 1/4" x 4" x 4" (Panel)
 - ⑳ Cream 1/4" x 4" x 4" (Panel)
 - ㉑ Cream 1/4" x 4" x 4" (Panel)
 - ㉒ Cream 1/4" x 4" x 4" (Panel)
 - ㉓ Cream 1/4" x 4" x 4" (Panel)
 - ㉔ Cream 1/4" x 4" x 4" (Panel)
 - ㉕ Cream 1/4" x 4" x 4" (Panel)
 - ㉖ Cream 1/4" x 4" x 4" (Panel)
 - ㉗ Cream 1/4" x 4" x 4" (Panel)
 - ㉘ Cream 1/4" x 4" x 4" (Panel)
 - ㉙ Cream 1/4" x 4" x 4" (Panel)
 - ㉚ Cream 1/4" x 4" x 4" (Panel)
 - ㉛ Cream 1/4" x 4" x 4" (Panel)
 - ㉜ Cream 1/4" x 4" x 4" (Panel)
 - ㉝ Cream 1/4" x 4" x 4" (Panel)
 - ㉞ Cream 1/4" x 4" x 4" (Panel)
 - ㉟ Cream 1/4" x 4" x 4" (Panel)
 - ㊱ Cream 1/4" x 4" x 4" (Panel)
 - ㊲ Cream 1/4" x 4" x 4" (Panel)
 - ㊳ Cream 1/4" x 4" x 4" (Panel)
 - ㊴ Cream 1/4" x 4" x 4" (Panel)
 - ㊵ Cream 1/4" x 4" x 4" (Panel)
 - ㊶ Cream 1/4" x 4" x 4" (Panel)
 - ㊷ Cream 1/4" x 4" x 4" (Panel)
 - ㊸ Cream 1/4" x 4" x 4" (Panel)
 - ㊹ Cream 1/4" x 4" x 4" (Panel)
 - ㊺ Cream 1/4" x 4" x 4" (Panel)

NOTES:

1. All work to be in accordance with the relevant standards and specifications.
2. All work to be completed in accordance with the relevant standards and specifications.
3. All work to be completed in accordance with the relevant standards and specifications.
4. All work to be completed in accordance with the relevant standards and specifications.
5. All work to be completed in accordance with the relevant standards and specifications.
6. All work to be completed in accordance with the relevant standards and specifications.
7. All work to be completed in accordance with the relevant standards and specifications.
8. All work to be completed in accordance with the relevant standards and specifications.
9. All work to be completed in accordance with the relevant standards and specifications.
10. All work to be completed in accordance with the relevant standards and specifications.
11. All work to be completed in accordance with the relevant standards and specifications.
12. All work to be completed in accordance with the relevant standards and specifications.
13. All work to be completed in accordance with the relevant standards and specifications.
14. All work to be completed in accordance with the relevant standards and specifications.
15. All work to be completed in accordance with the relevant standards and specifications.
16. All work to be completed in accordance with the relevant standards and specifications.
17. All work to be completed in accordance with the relevant standards and specifications.
18. All work to be completed in accordance with the relevant standards and specifications.
19. All work to be completed in accordance with the relevant standards and specifications.
20. All work to be completed in accordance with the relevant standards and specifications.

LINK
 APTITUDE ZETLAND

turner

15 Link Rd, 132-142 Upper Rd, Zetland 1016 2017

Project No: 11038
 Date: 01/10/17
 Page: DA33 of 0

Section: CC

ATTACHMENT A



Proposed Development - "Link"
 Building B
 Link Road
 Salford Subaru
 South Reefing Street

- Plant & Service Store
- Plant & Utility Store (P&U & Cold Store)
- Plant & Storage Store
- Plant & Supply Store

- Plant Store (1st-2nd)
- Store (1st-2nd)
- Storage (1st-2nd)
- Plant Store (1st)
- Store (1st)
- Storage (1st)

- Store (1st)
- Storage (1st)
- Plant Store (1st)
- Store (1st)
- Storage (1st)
- Plant Store (1st)

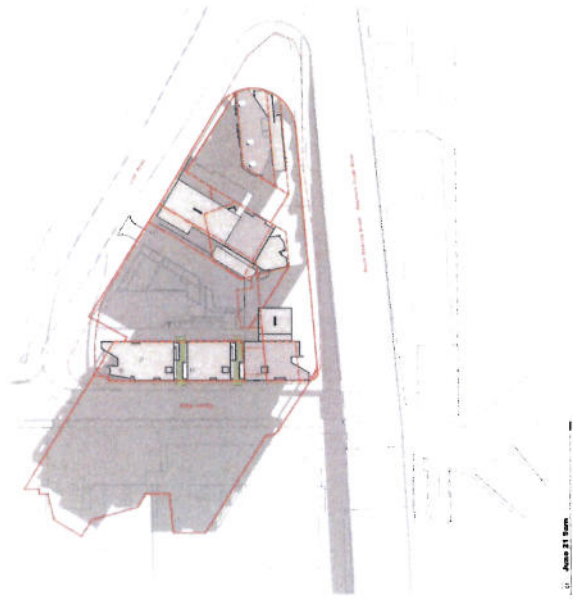
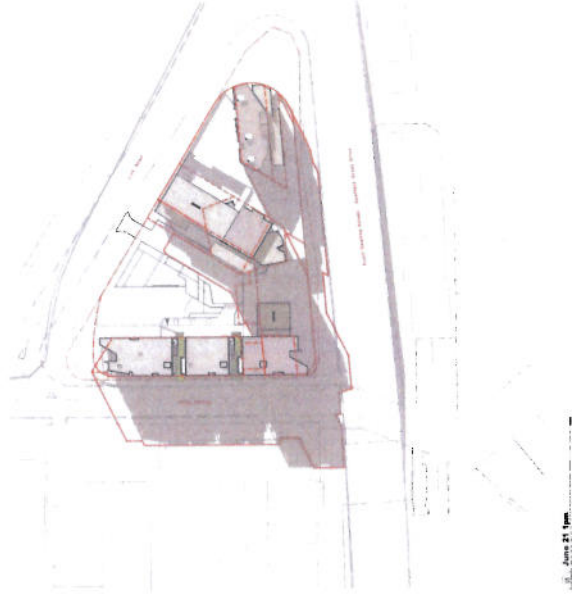
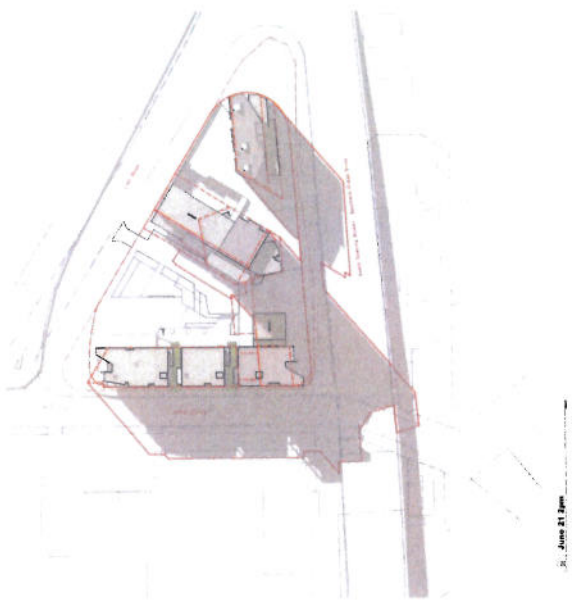
NOT SCALE

LEGEND: Materials & Finish (Refer to CAD for detail description of Materials & Finish)

- Brickwork
- Concrete Formwork (1st-2nd)
- Glass (1st-2nd)
- Brickwork (1st-2nd)
- Concrete Formwork (1st-2nd)
- Brickwork (1st-2nd)
- Concrete Formwork (1st-2nd)
- Concrete Formwork (1st-2nd)
- Concrete Formwork (1st-2nd)
- Concrete Formwork (1st-2nd)
- Concrete Formwork (1st-2nd)
- Concrete Formwork (1st-2nd)
- Concrete Formwork (1st-2nd)
- Concrete Formwork (1st-2nd)
- Concrete Formwork (1st-2nd)
- Concrete Formwork (1st-2nd)
- Concrete Formwork (1st-2nd)
- Concrete Formwork (1st-2nd)
- Concrete Formwork (1st-2nd)
- Concrete Formwork (1st-2nd)
- Concrete Formwork (1st-2nd)
- Concrete Formwork (1st-2nd)

Link Road
 Salford Subaru
 South Reefing Street

ATTACHMENT A



Legend:
 - Existing Buildings
 - Proposed Buildings
 - Proposed Footprint

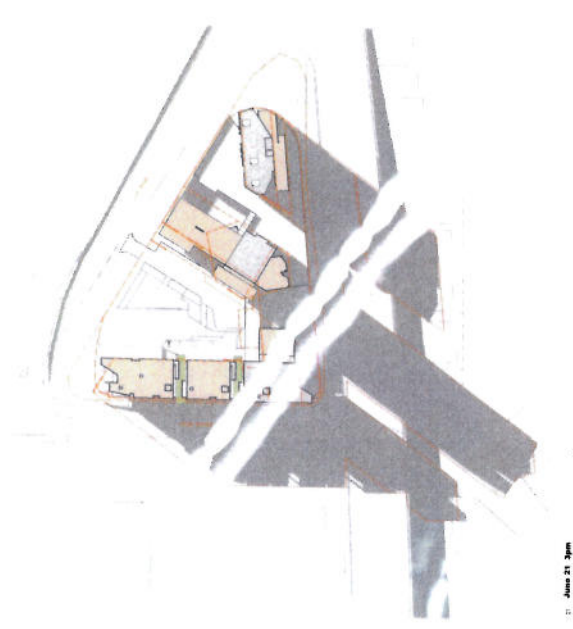
LINK
 12 Link Rd 132-142 Epsom Rd, Zealand Island 2017
 Project No: 11039
 Date: 08/04/2014
 Type: DA43
 Scale: 1:500

LINK
 APPOINTMENT ZETLAND

turner

11039
 08/04/2014
 DA43
 1:500

ATTACHMENT A



21 June 21, 2016

LINK
LINK CONSULTING ENGINEERS
1000 Bay Street, Suite 1000
San Francisco, CA 94133
Tel: 415.774.8888
www.link-engineers.com

LINK CONSULTING ENGINEERS, 1000 BAY STREET, SUITE 1000, SAN FRANCISCO, CALIFORNIA 94133. ALL RIGHTS RESERVED. THIS DOCUMENT IS THE PROPERTY OF LINK CONSULTING ENGINEERS. NO PART OF THIS DOCUMENT IS TO BE REPRODUCED OR TRANSMITTED IN ANY FORM OR BY ANY MEANS, ELECTRONIC OR MECHANICAL, INCLUDING PHOTOCOPYING, RECORDING, OR BY ANY INFORMATION STORAGE AND RETRIEVAL SYSTEM, WITHOUT THE WRITTEN PERMISSION OF LINK CONSULTING ENGINEERS.

LINK CONSULTING ENGINEERS
1000 BAY STREET, SUITE 1000
SAN FRANCISCO, CALIFORNIA 94133
TEL: 415.774.8888
WWW.LINK-ENGINEERS.COM

LINK
LINK CONSULTING ENGINEERS
1000 BAY STREET, SUITE 1000
SAN FRANCISCO, CALIFORNIA 94133
TEL: 415.774.8888
WWW.LINK-ENGINEERS.COM

LINK
LINK CONSULTING ENGINEERS
1000 BAY STREET, SUITE 1000
SAN FRANCISCO, CALIFORNIA 94133
TEL: 415.774.8888
WWW.LINK-ENGINEERS.COM

LINK
LINK CONSULTING ENGINEERS
1000 BAY STREET, SUITE 1000
SAN FRANCISCO, CALIFORNIA 94133
TEL: 415.774.8888
WWW.LINK-ENGINEERS.COM

PROJECT NO.	11039
DATE	DA03
SCALE	C

TURNER